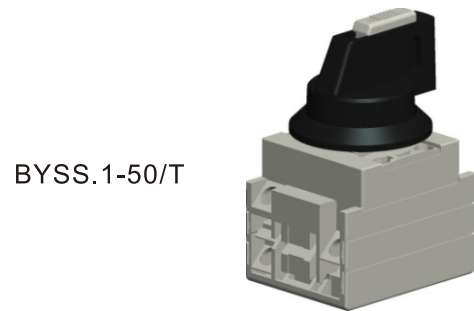


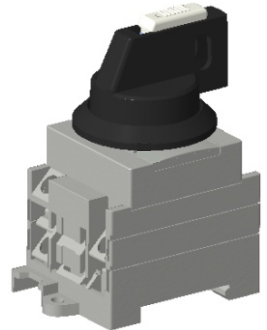


UL508i Certificate Number: E482690

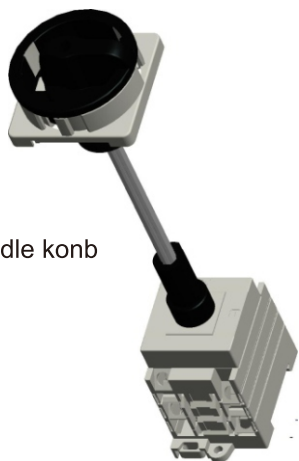
- 1 Brand
- 2 Type
- 3 OFF
- 4 ON
- 5 Electrical symbol



BYSS.1-50/T



BYSS.2-50



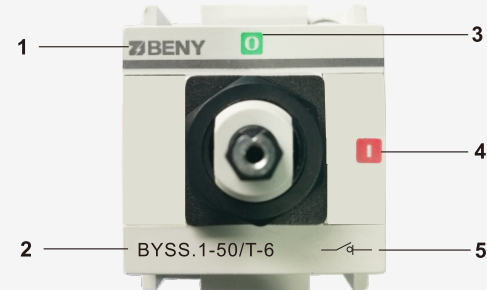
BYSS.2-50
with S type handle knob

Application

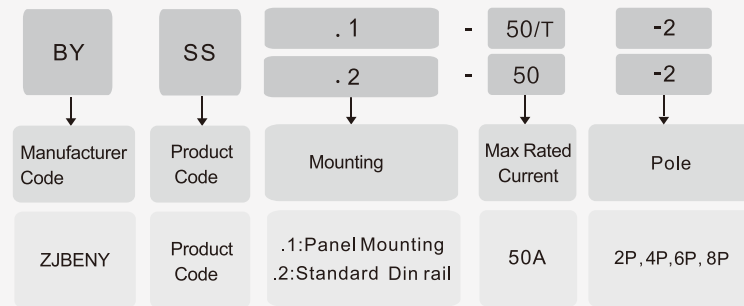
BYSS series DC disconnect switch in UL version is the best DC switch solution for solar inverter integrated.

- The first DC switch UL508i certificate in China.
- 2P switch at max DC 1000V/30A or 750V/50A per conductor.
- With special arcing extinguish instruction and patent, for reliable and fastcutting off the DC arcing.
- The series are suitable for multiple independent MPPTs.
- Lockable handle for safer application and system maintain.

Appearance Introduction



Type Instruction



Parameter

Electrical Characteristics		
Rated Working Voltage	Ue	Details in diagram
Rated Current	Ie	Details in diagram
Rated impulse withstand voltage	Uimp	8kV
Rated short-time withstand current (1s)	Icw	1.5kA
Rated short-circuit making capacity	Icm	2.0kA
Standard Short Circuit Rating		5kA
High-Fault Short Circuit Rating		8kA
Installation Environment		
Number of cycles of operation(With current)		6000
Number of cycles of operation(Without current)		10000
Pole		2/4/6/8
Mounting	Panel Mounting	Standard Din rail
Tightening torque terminal screws M4 , min. - max.M4		1.2N • m- 1.8N • m
Tightening torque panel mountig nut, min. - max.		2.4N • m- 2.6N • m
Tightening torque M3 screw in the standard black knob,min.-max.		0.5N • m- 0.7N • m
Tightening torque M3 screw in the Extension rod type knob,min.-max.		1.5N • m- 1.8N • m
Ambient temperature allowed between		-40°C ~ +85°C
Storage temperature allowed between		-40°C ~ +85°C
Relative Humidity		90%
Pollution degree		2
IP Class Protection		≥IP66 (Type 4X)

Parameter

TYPE	Rated Current(UL508i)				Poles in series	Number of Strings
	350V / 500V / 600V	750V	1000V			
 BYSS.1-50/T-2	 BYSS.2-50-2 Type S knob available	16A	50A	16A	2	1
		18A				
		20A				
		25A				
		32A				
		38A				
 BYSS.1-50/T-4	 BYSS.2-50-4 Type S knob available	40A	50A	16A	2	2
		45A				
		50A				
		16A				
		18A				
		20A				
 BYSS.1-50/T-6	 BYSS.2-50-6 Type S knob available	25A	50A	16A	2	3
		32A				
		38A				
		40A				
		45A				
		50A				
 BYSS.1-50/T-8	 BYSS.2-50-8 Type S knob available	30A	50A	16A	2	4
		16A				
		18A				
		20A				
		25A				
		32A				

Switching Configurations

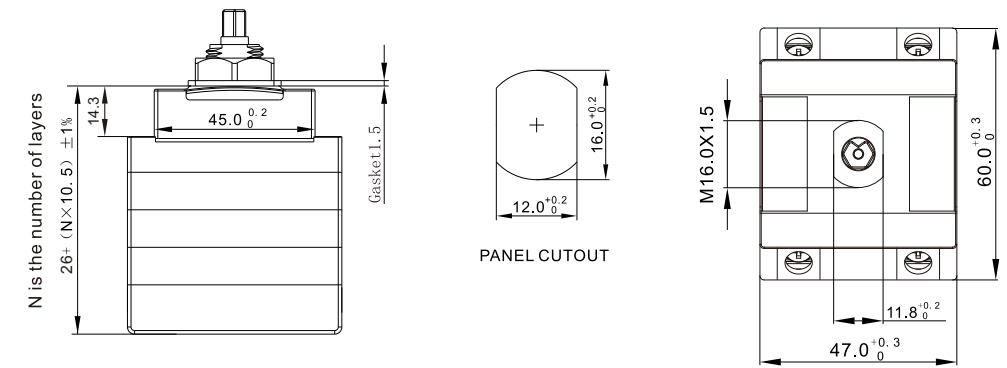
TYPE	2P	4P	6P	8P
Contacts Wiring diagram				
Switching example				

Operation knob type

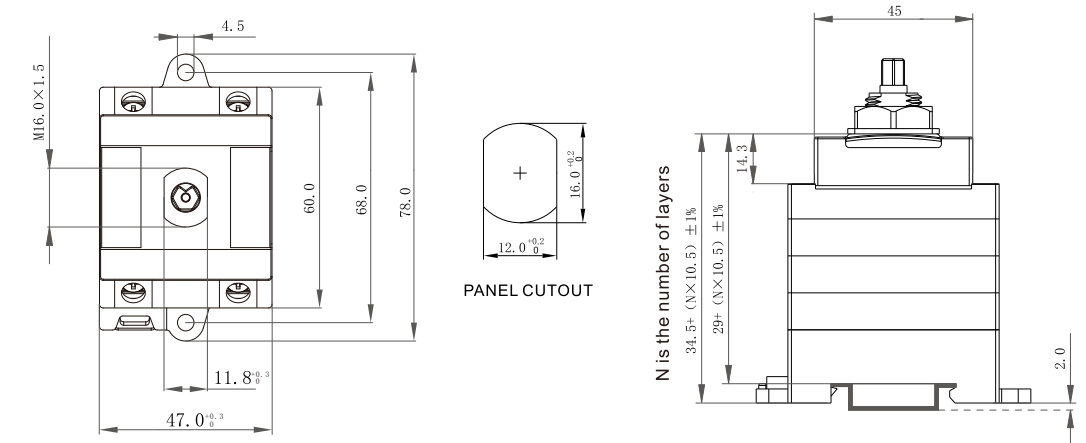
PICTURE	Suitable Type	Structure details										
	<p>BYSS.1-50/T BYSS.2-50</p>											
 <p>S type handle knob</p>	<p>Only for BYSS.2-50</p>	 <table border="1" data-bbox="1038 1302 1335 1596"> <thead> <tr> <th>Type</th> <th>H(min. -max.)</th> </tr> </thead> <tbody> <tr> <td>2P</td> <td>130mm-280mm</td> </tr> <tr> <td>4P</td> <td>150mm-300mm</td> </tr> <tr> <td>6P</td> <td>170mm-320mm</td> </tr> <tr> <td>8P</td> <td>190mm-340mm</td> </tr> </tbody> </table>	Type	H(min. -max.)	2P	130mm-280mm	4P	150mm-300mm	6P	170mm-320mm	8P	190mm-340mm
Type	H(min. -max.)											
2P	130mm-280mm											
4P	150mm-300mm											
6P	170mm-320mm											
8P	190mm-340mm											

Dimensions(mm)

BYSS.1-50/T Series mm

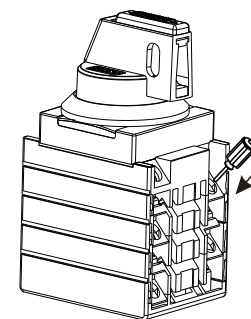


BYSS.2-50 Series mm

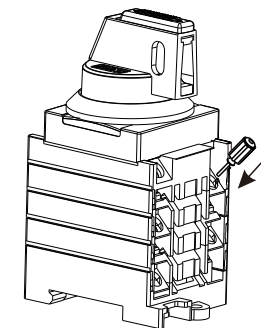


Wiring direction

BYSS.1-50/T



BYSS.2-50



Wiring Ratings

Wires per pole	Conductor material	Wire size(AWG, mm ²)	Torque
1	Copper (Cu)	12 AWG-6 AWG / 2.5mm ² ~10.0mm ²	1.8N·m